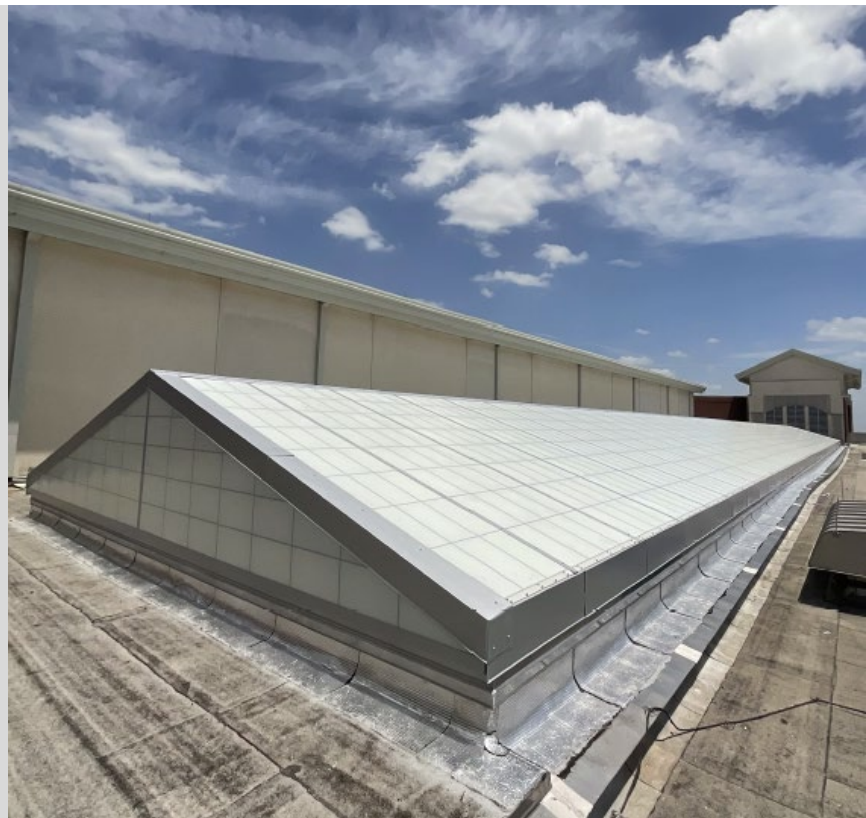


Berry Center

Daylighting



PROJECT TYPE

K-12 Education / Event Space

MANUFACTURER

Kalwall

PRODUCT

Translucent Sandwich Panel
Structural Skylight System

ARCHITECT

PBK Architects

GENERAL CONTRACTOR

Prime Contractors

OWNER

Cypress-Fairbanks Independent School District

LOCATION

Cypress, Texas

PHOTOGRAPHY

Griesenbeck

COMPLETION

2024

OBJECTIVE

After nearly 20 years of use, the existing skylight required replacement due to failing over time from water intrusion at the butt joint along the slope of the system.

BACKGROUND

The Richard E. Berry Educational Support Center opened in May 2006 to meet the community's need for a multi-purpose center. The intent was to provide a center that could host graduations, sporting events, training sessions for students and staff, and food distribution operations. The five buildings comprising the site cost \$80 million and have been a center for social activity in the northwest suburb of Houston since its opening.

SOLUTION

Griesenbeck replaced the existing skylight system with a single panel down slope to eliminate field joints and any potential for water intrusion. Additionally, the existing skylight structural supports were modified for the ease of accommodating future skylight replacements.

RESULT

The Berry Center's atrium is illuminated by a new 6,415 SF Kalwall fiberglass reinforced polymer skylight providing diffuse, museum-quality daylighting to the community for decades to come.

For design assistance or information on your next project visit <https://www.griesenbeck.com/> or call 713.781.3287.

Griesenbeck Architectural Products, Inc.
6160 Westview Drive | Houston, TX 77055
www.griesenbeck.com | © Copyright 2024

KALWALL®

high performance translucent building systems