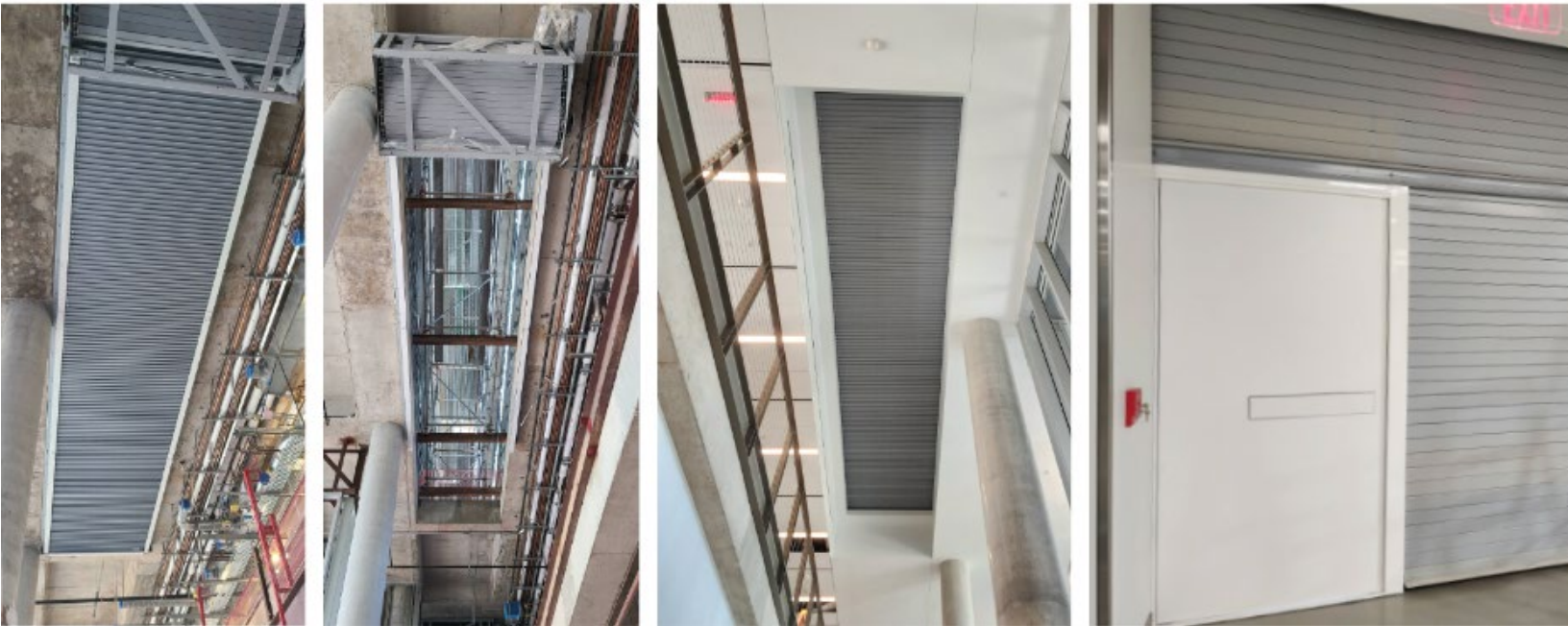


Prairie View A&M University Engineering Classroom and Research Building (“EnCARB”)

Open Space Design



PROJECT TYPE

Higher Education

MANUFACTURER

McKEON Door Company

PRODUCT

(3) Model H200 Horizontal Steel Fire Shutters &
(9) Model T2000 Vertical Coiling
Fire Shutters with Deployable Egress Doors

ARCHITECT

Stantec

GENERAL CONTRACTOR

Vaughn Construction

OWNER

Prairie View A&M University

LOCATION

Prairie View, Texas

PHOTOGRAPHY

Griesenbeck

COMPLETION

June 2022

OBJECTIVE

To bring Prairie View A&M University’s vision of an open and visually stunning new EnCARB Building to life, providing the next generation of top engineers and computer scientists a place to hone their skills.

BACKGROUND

The original design featured a three-story opening classified as an atrium, which would have required the vertical space to be a fully protected shaft enclosure using multiple fire-rated doors and solid-wall construction. It would also have altered the aesthetics. Griesenbeck worked with Stantec and the local code authority to address building safety requirements and allowed the overall vision to proceed into construction.

SOLUTION

To separate the two-story space from the remaining single story, Griesenbeck installed three Model H200 horizontal steel fire shutters. Each shutter is almost 7’ wide and ranges from 23’ to 32’ in length. Using deployable, horizontally oriented fire shutters that close only in the case of a fire allowed the design to remain open yet code compliant.

Additionally, because the code allows only 50% of required exit stairs to open into an atrium space, Griesenbeck installed nine Model T2000 vertical coiling fire shutters with deployable egress doors to protect the three stairwells on levels one through three while allowing building occupants to exit safely via the stairs.

For design assistance or information on your next project visit <https://www.griesenbeck.com/> or call (713) 781.3287

Griesenbeck Architectural Products, Inc.
6160 Westview Drive | Houston, TX 77055
www.griesenbeck.com | © Copyright 2024

