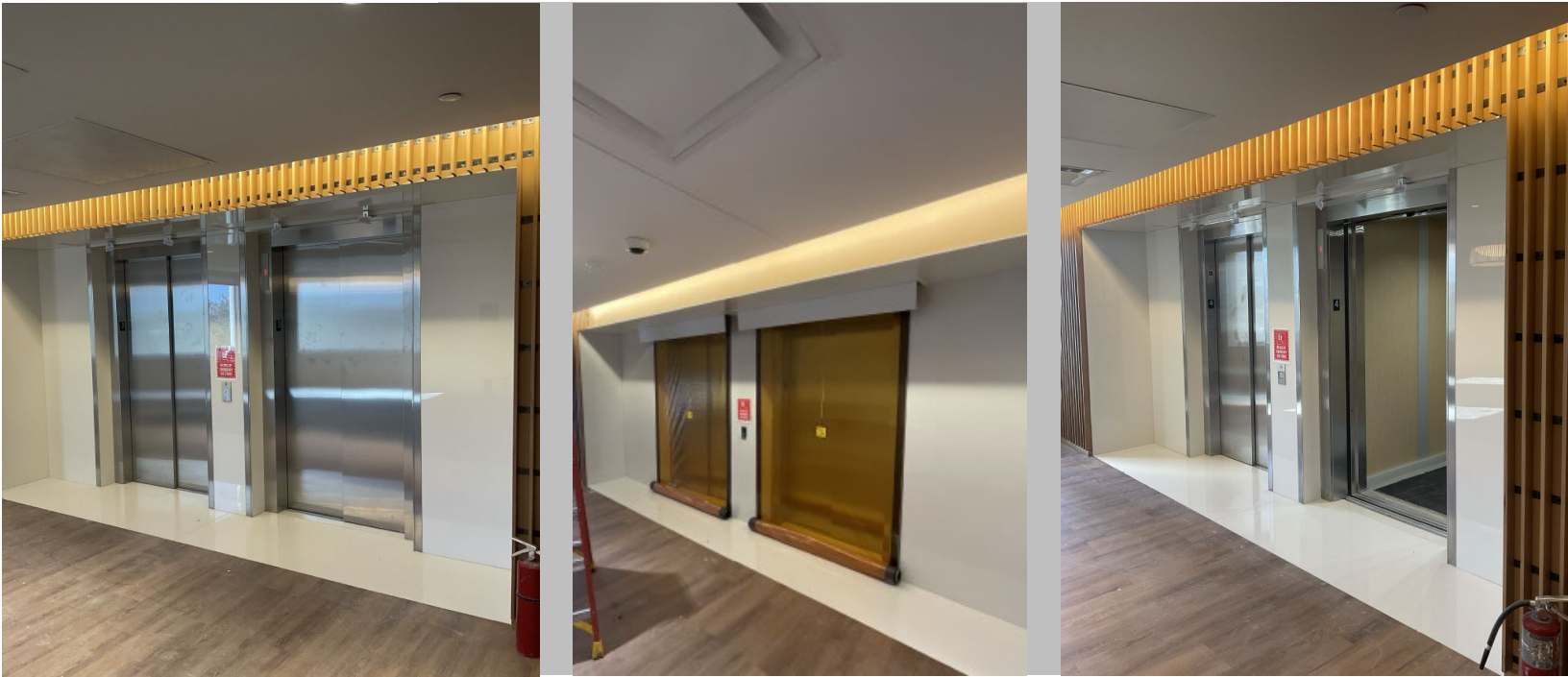


Covenant House Texas

Open Space Design



PROJECT TYPE

Non-Profit

MANUFACTURER

Smoke Guard

PRODUCT

12x M400 Elevator Unit Smoke Containment Curtains

ARCHITECT

Gensler

MECHANICAL ENGINEER

Telios

GENERAL CONTRACTOR

D.E. Harvey Builders

OWNER

Covenant House Texas

LOCATION

Houston, Texas

PHOTOGRAPHY

Griesenbeck

COMPLETION

2024

OBJECTIVE

A local non-profit providing housing and support to homeless youth built a new facility and needed to protect residents and staff from smoke in the event of an emergency.

BACKGROUND

Covenant House Texas has helped young people experiencing homelessness for over 40 years with shelter, food, clothing, education and professional development, and more. The new campus consists of a four-story, 104,000 square foot building with room for boarding, clinical spaces, a computer lab, chapel, fitness center, and outdoor space to help with all the different aspects of daily life young people need to thrive. Safety is paramount in residential settings, and Covenant House wanted to ensure safe egress during a fire or smoke event.

SOLUTION

Griesenbeck specified, sourced, and installed twelve Smoke Guard M400 elevator smoke curtains throughout the new building as part of a broader life safety strategy. When a signaling device such as a smoke detector is triggered, the smoke curtain system deploys, and a switch operable from either side of the curtain allows for building occupant egress. The magnetic borders of the curtain will reconnect with the elevator door frame after an occupant exits the elevator. Once the alarm is cleared, these smoke curtains automatically rewind into the unit housing, blending in with the ceiling to allow for a seamless aesthetic.

RESULT

Occupants of the new Covenant House Texas campus have a safer passage for egress in case of a smoke emergency thanks to the installation of a smoke containment curtain on each of the upper-floor elevators.

For design assistance or information on your next project visit <https://www.griesenbeck.com/> or call 713.781.3287.

Griesenbeck Architectural Products, Inc.
6160 Westview Drive | Houston, TX 77055
www.griesenbeck.com | © Copyright 2024

